

# DIETRIGAZ X..N

## CAST IRON FLOOR-STANDING ATMOSPHERIC GAS-FIRED BOILER

For hot water central heating and domestic hot water production from 23 to 54 kw



DTG X... N



DTG X... N  
+ GMT 130 tank juxtaposed



DTG X... N  
+ GMT 130 tank superposed



DTG X... N  
Heating



DTG X... N  
+ tank with GMT 130



Low temperature



Natural gases  
and Propane using  
the conversion kit

**ERC**

Range of low temperature floor-standing boilers with atmospheric burner for chimney connection

- Atmospheric burner with total premixing and very low pollutant emissions.
- Heating exchanger in eutectic cast iron with damp furnace and exchange surfaces with interlinked studs.
- Special flue gas circuit design limiting the natural draught when switched off and allowing high operating efficiency.
- Electronic ignition by ignition burner including 1 ignition electrode, 1 earth electrode and 1 ionisation sensor.
- Reinforced insulation reducing heat losses to the surrounding air to very low values.
- Flue gas anti-overflow safety system.
- Safety control box on gas valve unit, handling and controlling burner ignition sequences, operation and cut-off.
- Electromechanical control panel.

By juxtaposing or superposing a GMT 130 optional domestic hot water calorifier, DTG X boilers offer a double service, heating + DHW solution. DTG X boilers can also be fitted with any other De Dietrich DHW tank (150 to 500 litres).

### CONDITIONS OF USE

Max. operating temperature: 90°C  
Max. operating pressure: 4 bars  
Safety thermostat: 110°C

### HOMOLOGATION

B11BS

### GAS CATEGORY

I<sub>2H</sub>, II<sub>2H3P</sub>, propane using the conversion kit  
NOx classification : 3

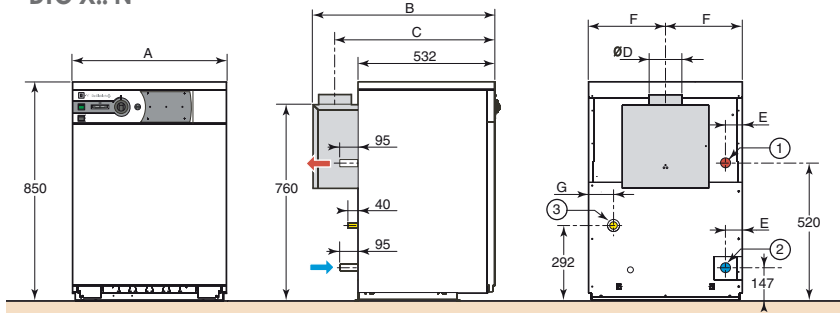
# MODELS AVAILABLE

By adding a GMT 130 domestic hot water calorifier, boiler/tank connection pipes with load pump and an optional MB2 (AD128) DHW priority module, DTG X boilers offer a domestic hot water

solution with a high level of comfort and performance. The GMT 130 calorifier can be juxtaposed (all models) or superposed (models 30 N and 36 N only) on the boiler.

## DIMENSIONS (MEASUREMENTS IN MM AND INCHES)

### DTG X.. N

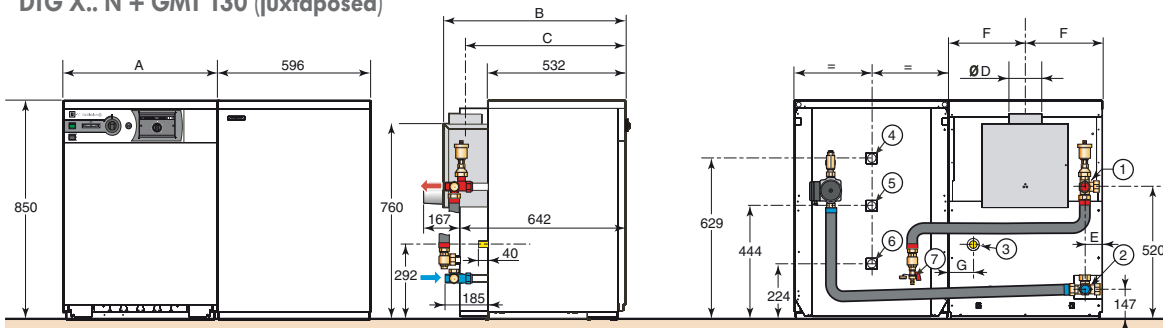


- ① Heating outlet :  
- R1 (1") for a boiler alone  
- G1 (1") for a boiler with tank
- ② Heating return :  
- R1 (1") for a boiler alone  
- G1 (1") for a boiler with tank
- ③ Gas inlet Ø H
- ④ Hot water outlet R 3/4 (3/4")
- ⑤ Circulation R 3/4 (3/4")
- ⑥ Cold water inlet R 3/4 (3/4")
- ⑦ Emptying valve , drain tap connection for pipe (Ø 14mm int.)

R = Thread  
G = Cylindrical external thread, leak tightness by flat gasket  
To improve legibility, the connecting kit is not represented on the central view.

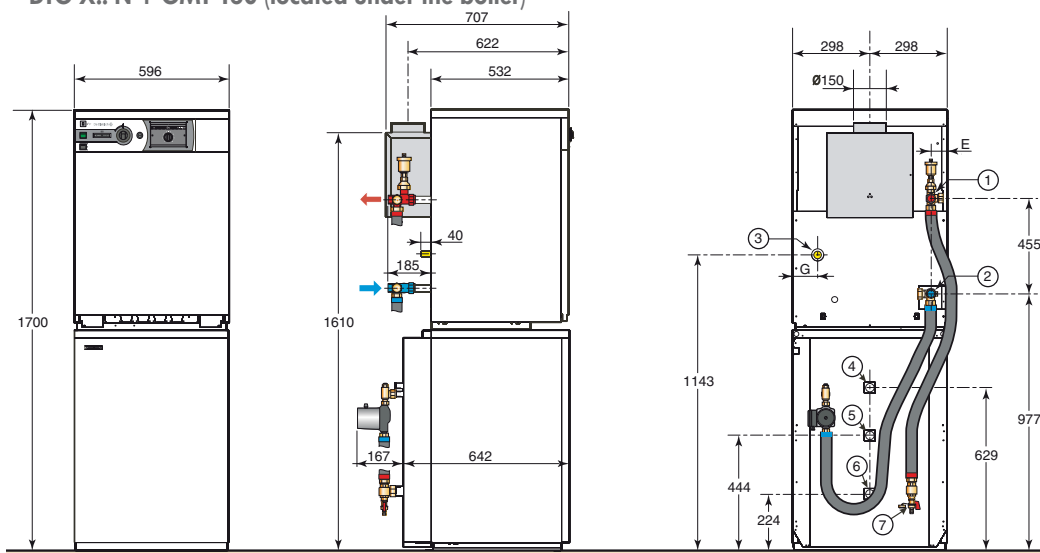
DTGX\_F0001

### DTG X.. N + GMT 130 (juxtaposed)



DTGX\_F0002

### DTG X.. N + GMT 130 (located under the boiler)



DTGX\_F0003

	DTG X 23 N DTG X 23 N + GMT 130 (Juxtaposed)	DTG X 30 N DTG X 30 N + GMT 130 (Juxtaposed)	DTG X 36 N DTG X 36 N + GMT 130 (Juxtaposed)	DTG X 42 N DTG X 42 N + GMT 130 (Juxtaposed)	DTG X 48 N DTX G 48 N + GMT 130 (Juxtaposed)	DTG X 54 N DTG X 54 N + GMT 130 (Juxtaposed)
	-	DTG X 30 N + GMT 130 (Located under the boiler)	DTG X 36 N + GMT 130 (Located under the boiler)	-	-	-
A	452	596	596	740	740	884
B	707	707	707	737	737	737
C	622	622	622	637	637	637
Ø D	130	150	150	180	180	180
E	49	85	49	85	49	85
F	226	298	298	370	370	442
G	60	96	64	96	64	96
H	R 1/2	R 1/2	R 1/2	R 3/4	R 3/4	R 3/4

# TECHNICAL SPECIFICATIONS

Model	DTG X	23 N	30 N	36 N	42 N	48 N	54 N
Useful output	kW	23	30	36	42	48	54
Useful output	kcal/h	19776	25795	30954	36113	41273	46432
Gas flow	- Natural gas H (G20) (1)	m <sup>3</sup> /h	2.71	3.52	4.22	4.92	5.62
	- Natural gas L (G25) (1)	m <sup>3</sup> /h	3.15	4.10	4.91	5.72	6.54
	- Propane (G31)	kg/h	1.989	2.587	3.100	3.612	4.125
Number of cast iron sections		4	5	6	7	8	9
Number of nozzles		3	4	5	6	7	8
Flue gas mass flow rate (G20)	kg/h	71	101	102	136	142	149
Flue gas temperature	°C	130	125	140	125	130	133
Draught required at the nozzle	mbar	0.03	0.03	0.03	0.03	0.03	0.03
Electrical connection	V/Hz	230/50	230/50	230/50	230/50	230/50	230/50
Absorbed electrical power	W	8	8	8	8	8	8
Water capacity	l	8.8	10.5	12.2	13.9	15.6	17.3
Loss of load hydraulic circuit at $\Delta T = 15$ K	mbar	14	23	33	45	59	75
Net weight	kg	95	114	131	148	164	179.5
Gross weight	kg	113	134	151	173.5	189.5	210

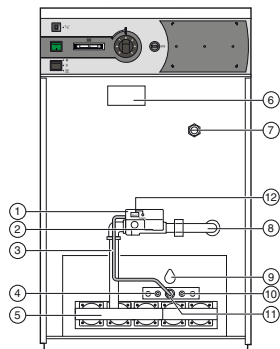
(1) 15 °C - 1013 mbars

## DOMESTIC HOT WATER PRODUCTION SPECIFICATIONS

Model	DTG X	23 N + GMT 130	30 N + GMT 130	36 N + GMT 130	42 N + GMT 130	48 N + GMT 130	54 N + GMT 130
Tank storage capacity	l	130	130	130	130	130	130
Exchanger output (1) (2)	kW	23	30	31	31	31	31
Flow per hour at $\Delta t = 35$ K (1) (2)	l/h	565	740	760	760	760	760
Flow over 10 min. at $\Delta t = 30$ K (1) (3)	l/10 min.	210	220	220	220	220	220
Spec. flow at $\Delta t = 30$ K (1) (3)	l/min.	20.5	21	21	21	21	21
DHW loss through the outside casing at $\Delta T = 45$ K	W	68	68	68	68	68	68

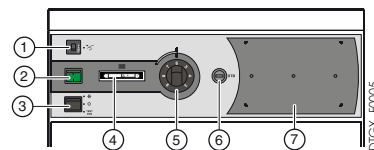
(1) Cold water at 10°C - pump at speed 3 - boiler outlet at 80°C (2) Domestic outlet at 45°C (3) Domestic outlet at 40°C

## DESCRIPTION



DTGX\_F0006

- ① Safety control box
- ② Gas regulation unit
- ③ Gas supply pipe to the ignition burner
- ④ Ignition electrode
- ⑤ Burner
- ⑥ Flue gas anti-overflow thermostat
- ⑦ Thimble tube
- ⑧ Gas inlet
- ⑨ Flame detection cell
- ⑩ Ionisation sensor
- ⑪ Ignition burner
- ⑫ Reset button and fault alarm light




DTGX\_F0005

- ① Timed circuit breaker (4 A)
  - ② Main switch  
On 1/Off 0
  - ③ 3-position switch:  
- Winter ❄️  
- Summer ☀️  
- STB TEST
  - ④ Boiler thermometer
  - ⑤ Boiler thermostat (30-70°C) (c)
  - ⑥ Safety thermostat: 110°C
  - ⑦ Location for MB2 module (obligatory if a hot water tank is connected, see list of options page 4)
- (c) Adjustment range up to 90°C if removing the boiler thermostat stop

# PACKAGING

## PACKAGING

DTG X...N boilers are delivered fully assembled.

Boiler	Model	Reference No.	Package No.	Dimensions (mm)	Weight (kg)
	DTG X 23 N	100004030	GX1	550 x 810 x 1040	114.0
	DTG X 30 N	100004031	GX2	700 x 810 x 1040	133.0
	DTG X 36 N	100004032	GX3	700 x 810 x 1040	152.0
	DTG X 42 N	100004033	GX4	840 x 830 x 1040	176.0
	DTG X 48 N	100004034	GX5	840 x 830 x 1040	189.0
	DTG X 54 N	100004035	GX6	985 x 840 x 1040	215.0

DTGX\_Q0001

# OPTIONS



**GMT 130 domestic hot water calorifier** - Package EA1 - Ref. 89529060  
(1000 x 900 x 880 mm - 95,0 kg)



**Connection kit to GMT 130 calorifier** - Package EA30 - Ref. 89997035  
(575 x 505 x 135 mm - 6,5 kg)



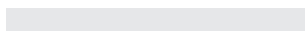
**MB2 DHW priority module** - Package AD128 - Ref. 88017842  
(260 x 160 x 120 mm - 0,8 kg)



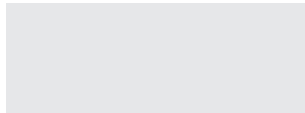
**Ionisation current amplifier** - Package GX7 - Ref. 100004610  
(260 x 160 x 120 mm - 0,8 kg)



**Room thermostat:**  
 - **programmable (wire)** - Package AD137 - Ref. 88017855 (130 x 90 x 55 mm - 0,2 kg)  
 - **non-programmable** - Package AD140 - Ref. 88017859 (80 x 80 x 40 mm - 0,1 kg)  
 - **programmable (wireless)** - Package AD200 - Ref. 88017018 (175 x 150 x 90 mm - 0,4 kg)



**Natural gas H conversion kit, G 20 - 13 mbar** - Package GX10 - Ref. 100004614



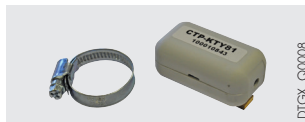
**Propane gas conversion kit, G 31** (250 x 190 x 10 mm - 0,1 kg):  
 - **DTG X 23-30-36 N** - Package GX12 - Ref. 100004616  
 - **DTG X 42 N** - Package GX13 - Ref. 100004617  
 - **DTG X 48 - 54 N** - Package GX14 - Ref. 100004815



**Domestic hot water calorifier:**  
 - **BLC 150** - Ref. 100018088 (800 x 750 x 1110 mm - 70 kg)  
 - **BLC 200** - Ref. 100018089 (900 x 800 x 1390 mm - 82 kg)  
 - **BLC 300** - Ref. 100018090 (900 x 800 x 1910 mm - 107 kg)  
 - **BLC 400** - Ref. 100018091 (980 x 850 x 1820 mm - 140 kg)  
 - **BLC 500** - Ref. 100018092 (850 x 980 x 1910 mm - 169 kg)  
 - **Connection kit for connection to calorifier B...** - Package EA29 - Ref. 89997034  
(410 x 280 x 160 mm - 7,25 kg)



**Regulation RX 77** - Package AD230 - Ref. 100008844  
(260 x 200 x 80 mm - 1,3 kg)



**Flow sensor CTP-KTY81** - Package AD240 - Ref. 100010843  
(80 x 80 x 35 mm - 0,1 kg)



**Room sensor CTI-02-KTY81** - Package AD238 - Ref. 100010844  
(85 x 80 x 25 mm - 0,1 kg)



**Room sensor with interactive remote control CTI-S-03** - Package AD239 - Ref. 100010845  
(80 x 75 x 35 mm - 0,1 kg)

DE DIETRICH THERMIQUE

S.A.S. with corporate capital of 22 487 610 €  
 57, rue de la Gare - F-67580 MERTZWILLER  
 Tel. +33 (0)3 88 80 27 00 - Fax +33 (0)3 88 80 27 99  
 www.dedietrich-heating.com

De Dietrich